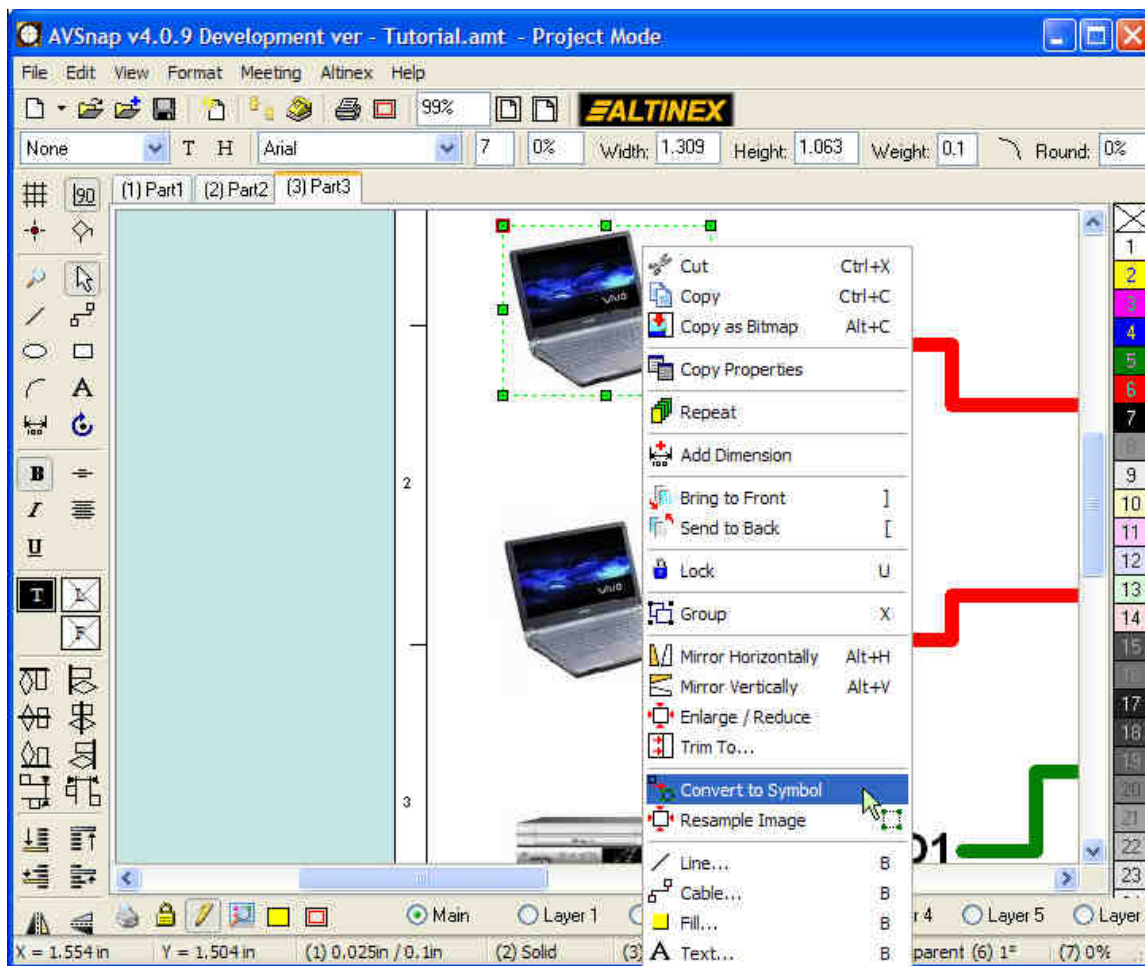


Further Fine Tune AV System Diagram For Quoting Purpose

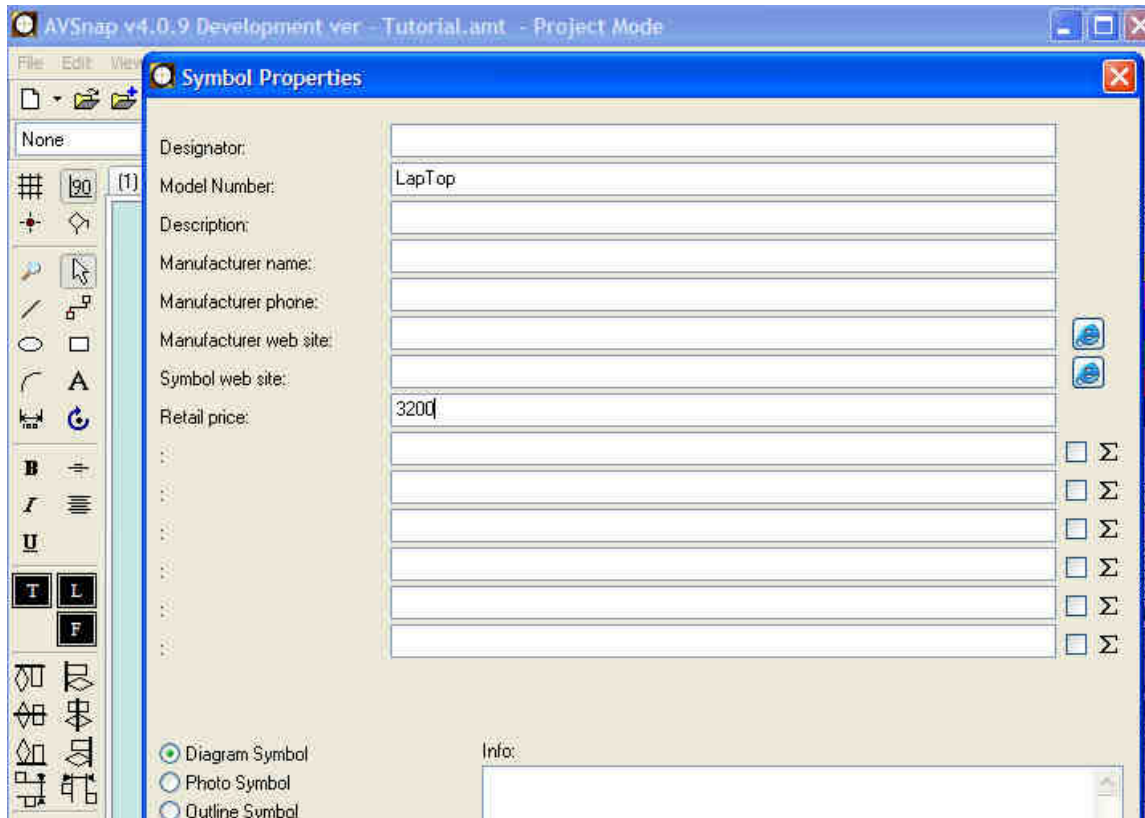
In the previous tutorial we have drawn and cleaned up our design, making it look presentable. In this tutorial we will fine tune the application diagram further to generate both cable and product lists for quotation purpose..

Step 1: Convert objects to symbols and name them

As briefly mentioned in the previous tutorial, any object or group of objects can be easily converted to symbols to store additional info about the products or components. To do so, right click on the object or group of selected objects. Once converted to symbols, the property of symbols can be modified by double clicking on it.



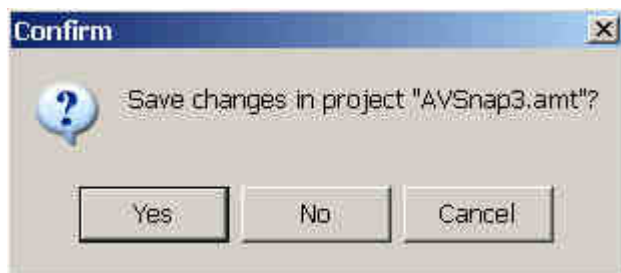
Enter model number and Retail price



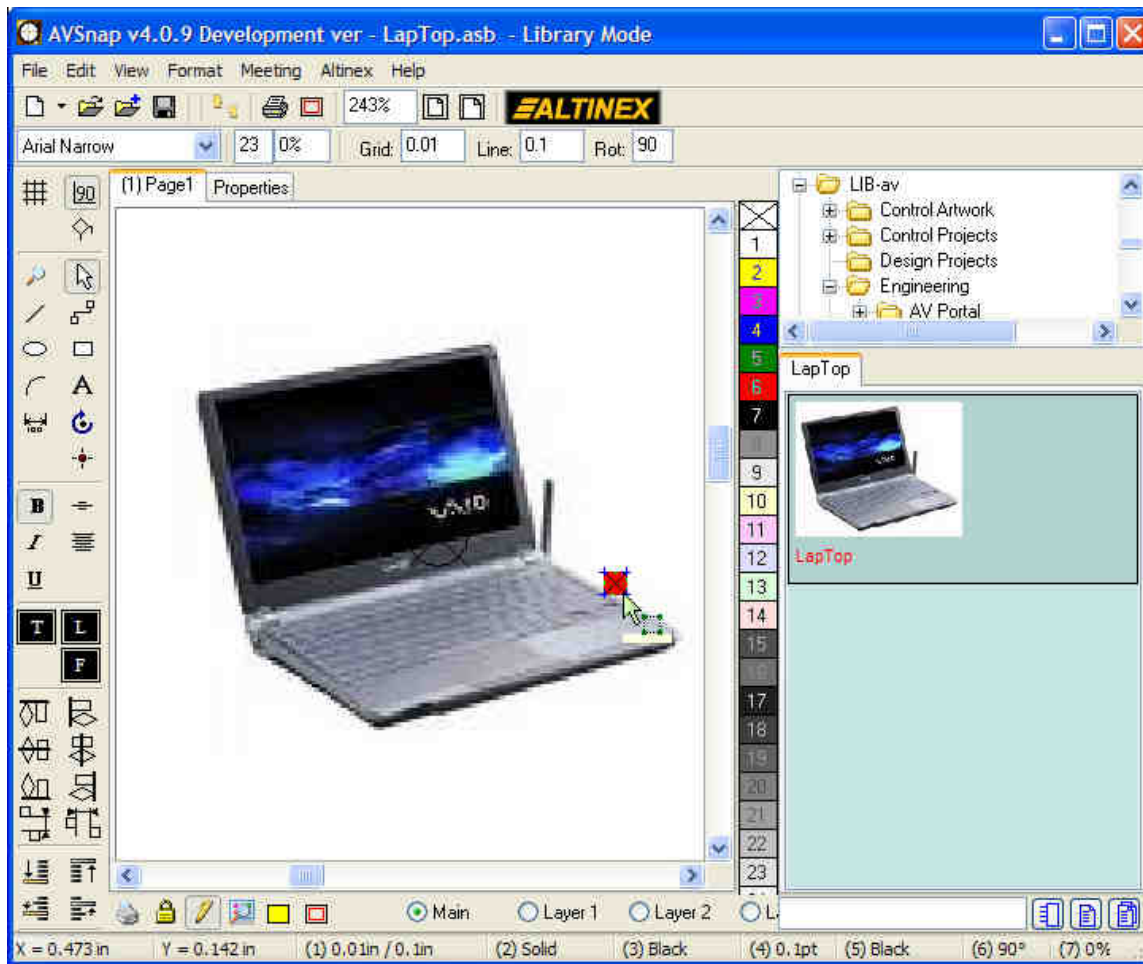
Once symbol is created copy and paste them as needed. Repeat the same steps on matrix displays.

Step 2: Edit symbols and add snap points

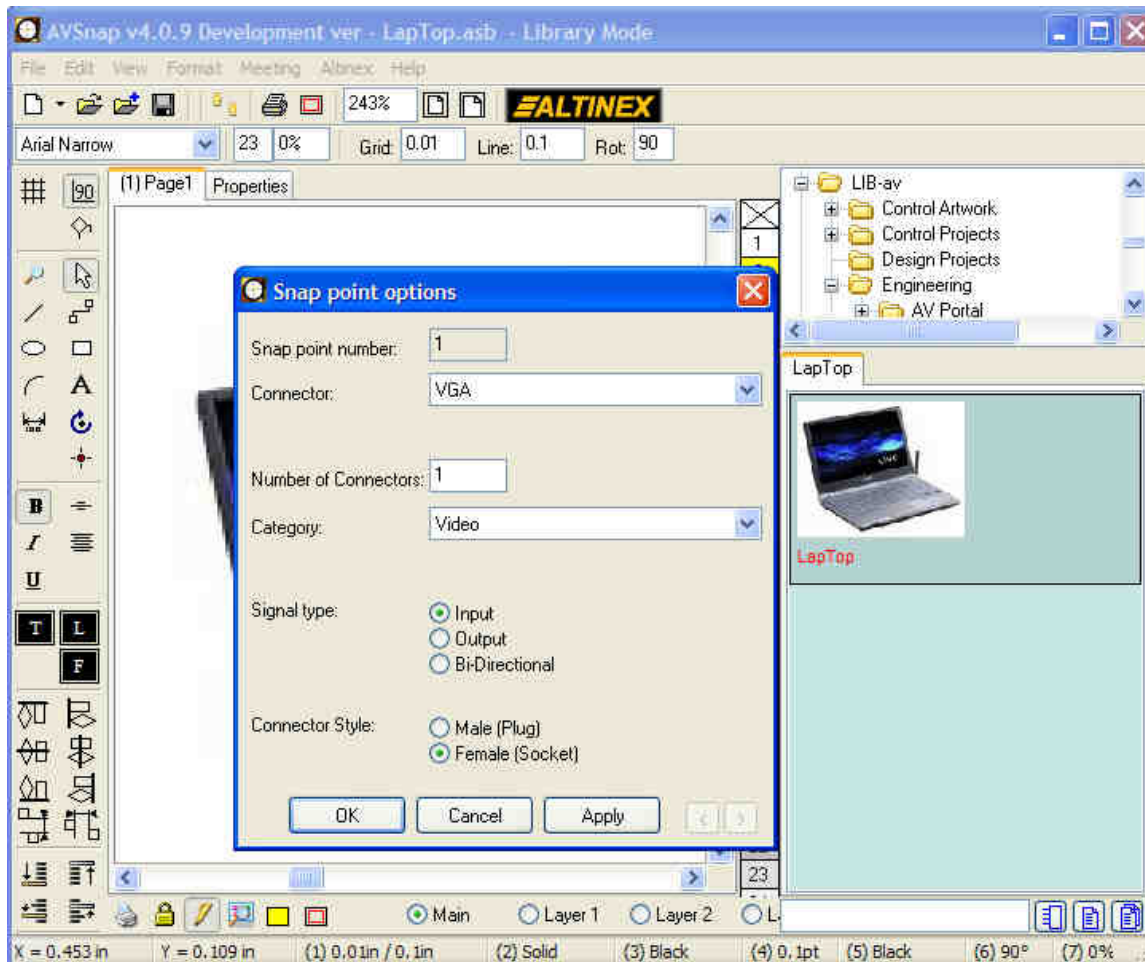
Another benefit of symbols is that each of the symbols can be edited and more snap points can be added to allow proper cable connection and routing verification. Right click on a symbol and select "Edit Symbol". You will be asked to save your work before editing symbol.



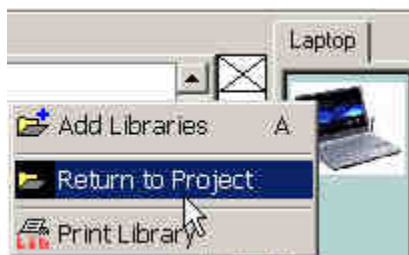
Press "S" and a snap point will show up. Place the snap point on the desired place of the symbol.



Double click on the snap point and define connector type, signal type and number of connectors per port.



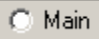


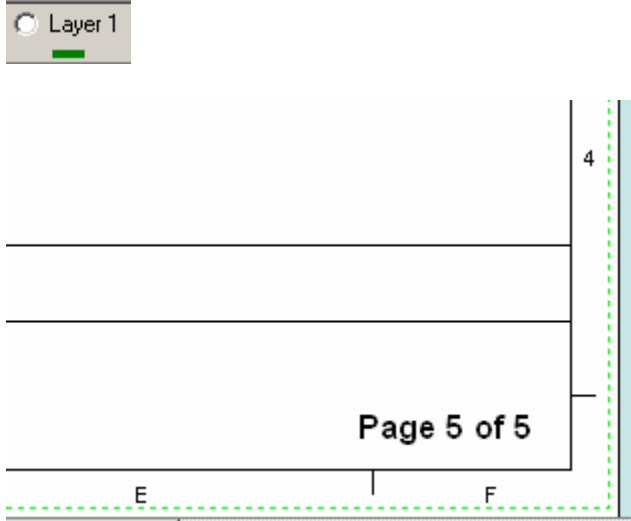
Right click on the library pane and select “Return to project”. You will be asked to save the symbol info as .asb file. Only save the asb file to save the symbol if you anticipate using the same symbol on other AVSnap projects. When asked if you want to update all symbols select “Yes” so that the same symbols on the same project will contain the same info. Repeat the same for other different symbols.






Step 4: Put the frame in the different layer

Click anywhere on the frame of the whole diagram to select it. Click Layer 1  in the bottom of the screen. Click the lock icon  on the left to lock the layer. Click back to the main layer.  When a layer is locked, the green bar will show under that layer as shown here.





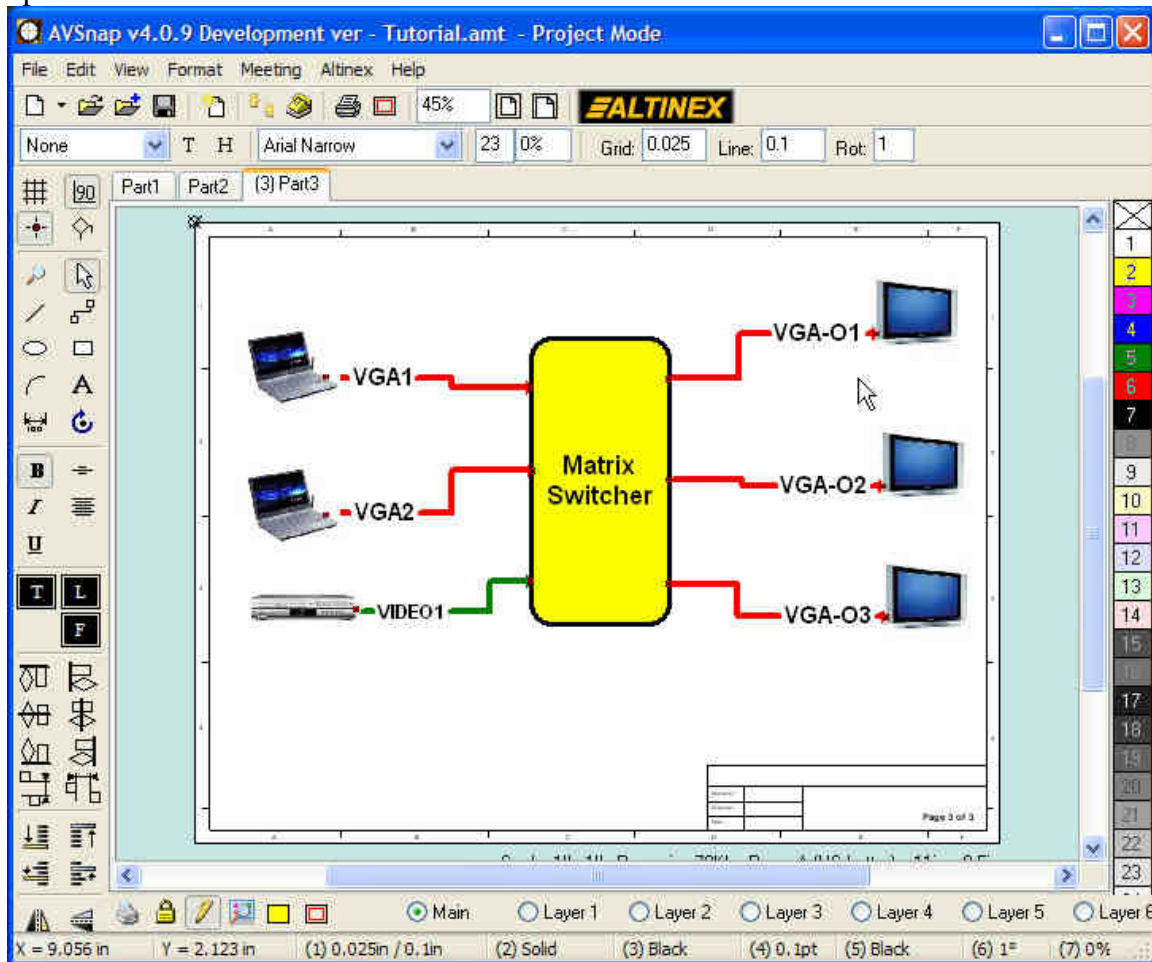
Tip1: to know which items are located for different layers, select the specific layer

and click . When it is turned to , the items on this layer will disappear.

Tip2: the reason of locking the frame in the separate layer is to ensure the snap points of other components can be added properly, since the frame is also a symbol

Step 3: Connect cables using snap point

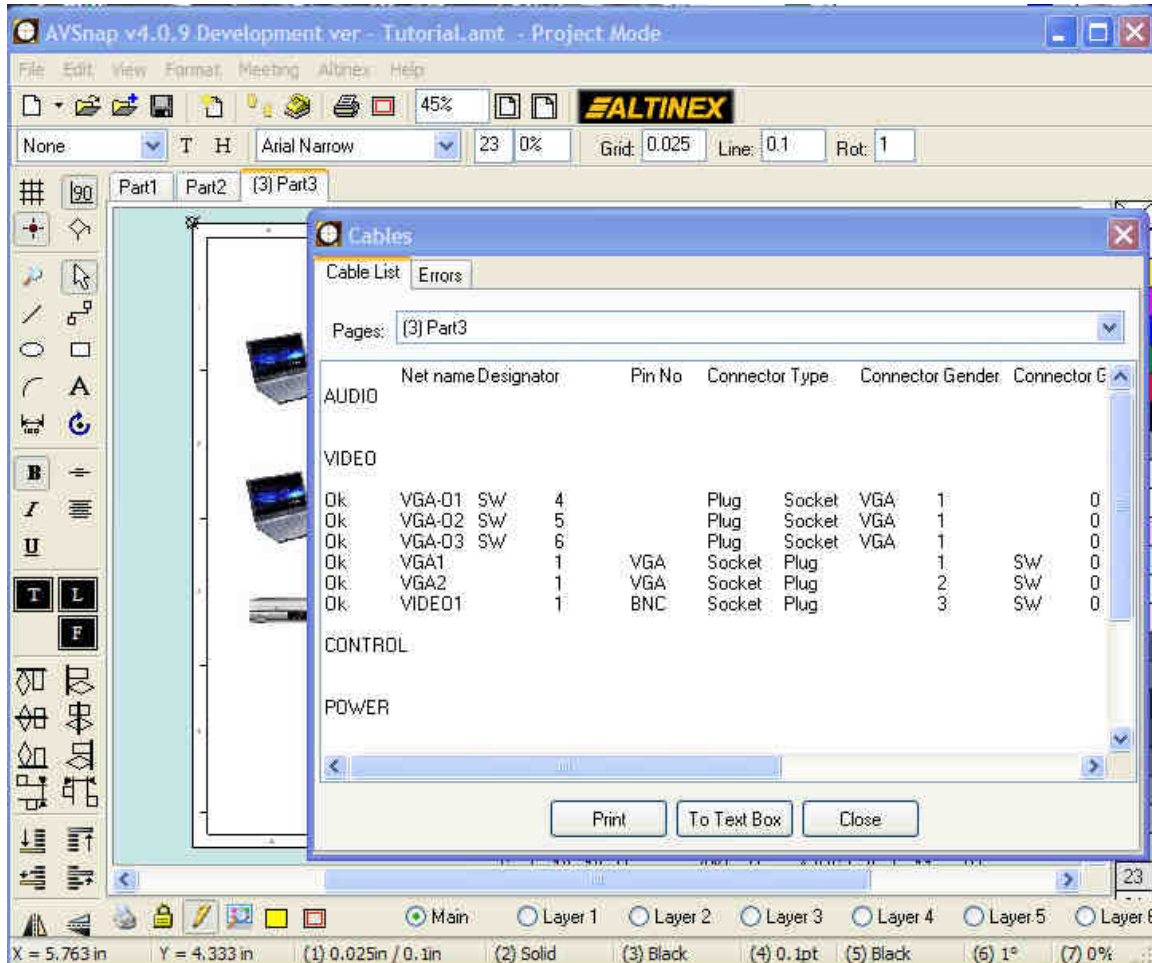
Adjust all cables to connect between symbol's snap points. If snap points are not visible, press shortcut "S" to enable them. If a cable line is covered by the white background of the components, select the desired cable and click  to bring it to front or  to move one layer up.



Step 4: Generate cable list

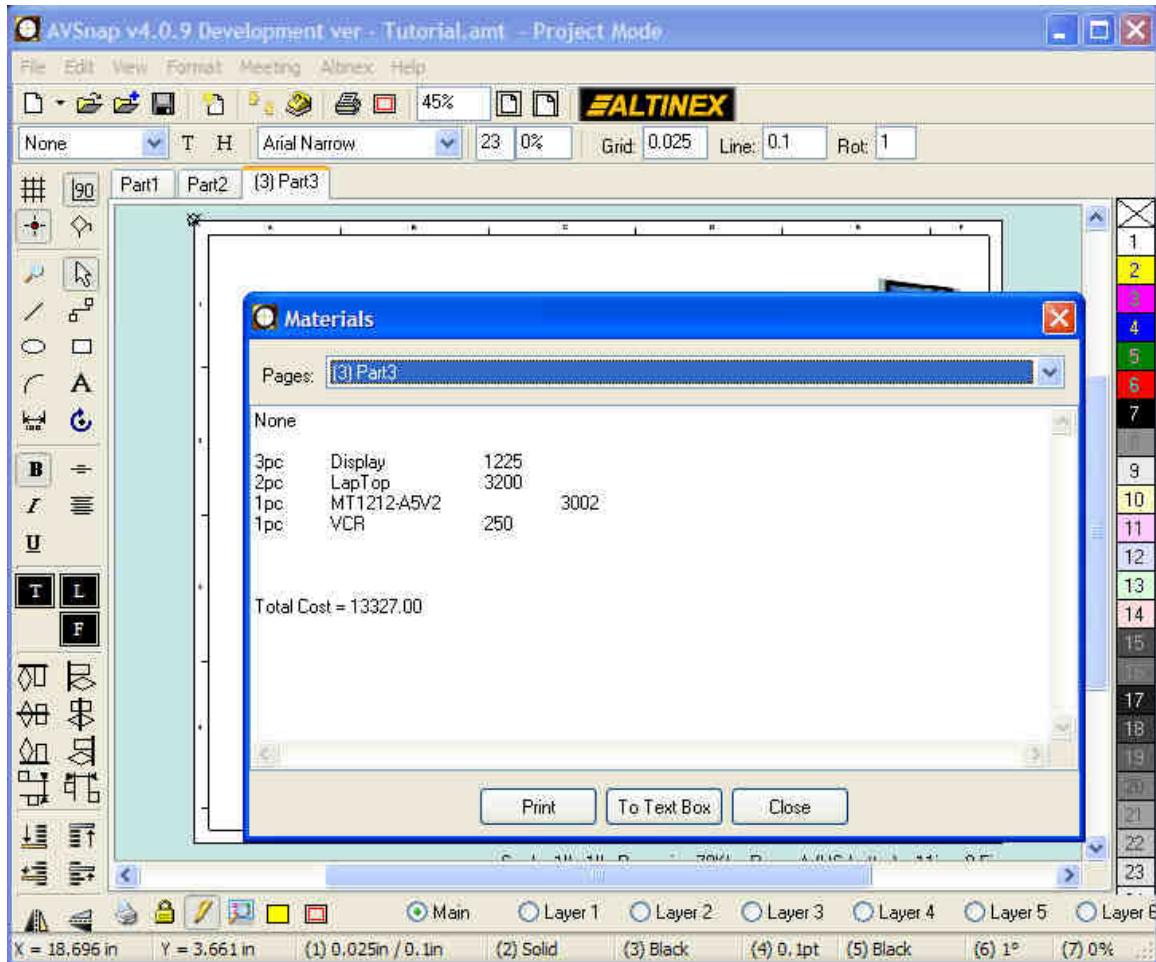
To generate Cable List press “Y” shortcut. If needed, enable error checking on Errors tab for additional functionality. As noticed on the list, the info is generated from the snap points created earlier. The items are sorted by different types of Category.

All of the information can be cut and pasted from the text box to Excel for further modification.



Step 5: Generate Materials list

To generate Materials List press “M” shortcut. All of the information can be cut and pasted from the text box to Excel.



Step 6: Save the file

Select File -> Save menu and save the created file.